

Bloc Loc HRT Rulers A and B will accurately trim oversized single direction and mirror image half-rectangle triangles by locking onto the diagonal seam allowance.

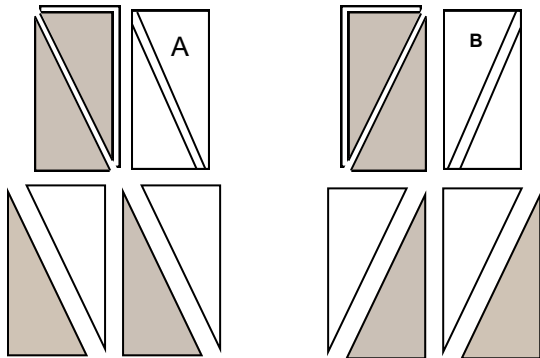
Directions

1. Use the cutting chart measurements to determine the cut sizes of rectangles.
2. Cut the desired size rectangles.
3. Keep the rectangles in pairs with right sides up and edges even.
4. Decide which direction the seam must go on your desired unit; if it leans to the left, it is an A unit but if it leans to the right it is a B unit.

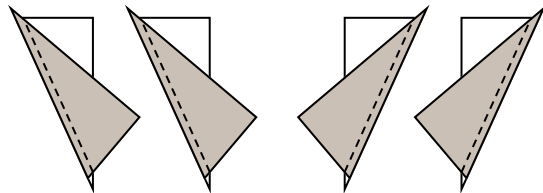


For every pair of rectangles cut, you will make 2 HRT.

5. Cut the units in half diagonally corner to corner.
6. Open the pairs and arrange them as shown below.



7. Flip a triangle so that it is right sides together and off-set the triangle tips by 1/4" (and maybe a tiny bit over). Stitch 1/4" seam.



Press seams to one side, depending on the pattern directions.

8. Place Bloc Loc HRT B Ruler on top of a B unit so that the seams are locked onto the groove fully and the logo is on the low side (no seam allowance) on that side of the unit. Slide the ruler so that there is enough fabric on the opposite end to trim, the measurement is correct and then make your first trim across one side and across one end (fig.1).

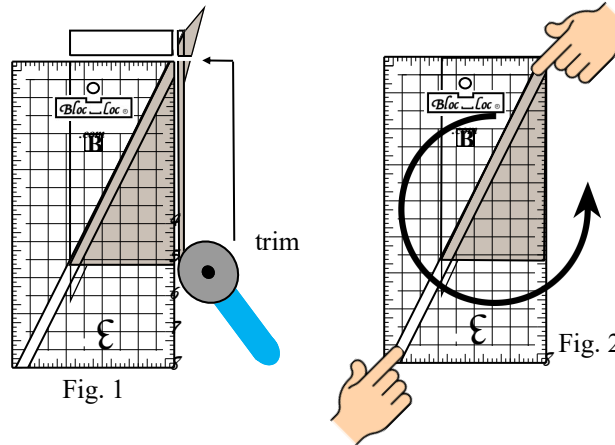


Fig. 1

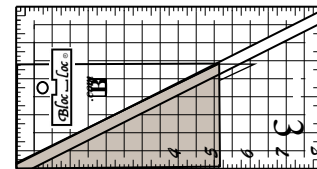


Fig. 3

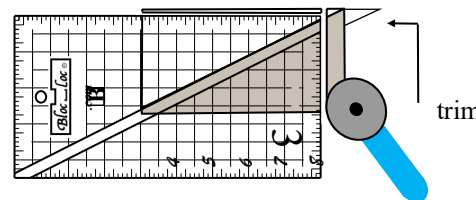


Fig. 4

9. Put a finger on each corner at the groove and turn the entire unit around (fig. 2-3). Slide the ruler to expose the untrimmed side and the measurement is aligned with the trimmed edges. Make the final trim (fig. 4).



Half-Rectangle Triangle (HRT) Ruler Set



Make HRTs in 14 sizes up to 4 1/2" x 8 1/2"



Includes Rulers A and B for ultimate versatility



Groove locks onto seam for precision



Fast trimming

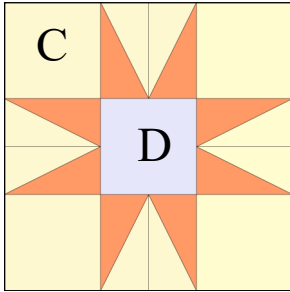


1/8" Increments



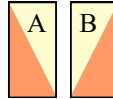


10. For Ruler A, the procedure is the same except you will trim Unit A from the left and across the top.





Sun Ray's Quilt Block

- Follow the cutting chart for HRT sizes
1. Make (4) A HRT and (4) B HRT
 2. Sew together into pairs
 3. Arrange HRT pairs and squares C and D into 9-patch unit and sew into rows.
 4. Join rows together.



Finished HRT size	Square C (cut 4)	Square D (cut 1)	Finished Block size
3/4" x 1 1/2"	2"	2"	4 1/2"
1" x 2"	2 1/2"	2 1/2"	6"
1 1/4" x 2 1/2"	3"	3"	7 1/2"
1 1/2" x 3"	3 1/2"	3 1/2"	9"
1 3/4" x 3 1/2"	4"	4"	10 1/2"
2" x 4"	4 1/2"	4 1/2"	12"
2 1/4" x 4 1/2"	5"	5"	13 1/2"
2 1/2" x 5"	5 1/2"	5 1/2"	15"
2 3/4" x 5 1/2"	6"	6"	16 1/2"
3" x 6"	6 1/2"	6 1/2"	18"
3 1/4" x 6 1/2"	7"	7"	19 1/2"
3 1/2" x 7"	7 1/2"	7 1/2"	21"
3 3/4" x 7 1/2"	8"	8"	24"
4" x 8"	8 1/2"	8 1/2"	24"

Cutting Chart for HRT Sizes

Finished Size HRT	Cut Rectangles (oversized)	Unfinished Size Trim to:		
3/4" x 1 1/2"	1 3/4" x 3 1/2"	1 1/4" x 2"		
1" x 2"	2" x 4"	1 1/2" x 2 1/2"		
1 1/4" x 2 1/2"	2 1/4" x 4 1/2"	1 3/4" x 3"		
1 1/2" x 3"	2 1/2" x 5"	2" x 3 1/2"		
1 3/4" x 3 1/2"	2 3/4" x 5 1/2"	2 1/4" x 4"		
2" x 4"	3" x 6"	2 1/2" x 4 1/2"		
2 1/4" x 4 1/2"	3 1/4" x 6 1/2"	2 3/4" x 5"		
2 1/2" x 5"	3 1/2" x 7"	3" x 5 1/2"		
2 3/4" x 5 1/2"	3 3/4" x 7 1/2"	3 1/4" x 6"		
3" x 6"	4" x 8"	3 1/2" x 6 1/2"		
3 1/4" x 6 1/2"	4 1/4" x 8 1/2"	3 3/4" x 7"		
3 1/2" x 7"	4 1/2" x 9"	4" x 7 1/2"		
3 3/4" x 7 1/2"	4 3/4" x 9 1/2"	4 1/4" x 8"		
4" x 8"	5" x 10"	4 1/2" x 8 1/2"		